

# PRODUCT LINE CARD OVERHEAD CRANES



## Gantry Crane Product Line

Spanco offers the largest selection of portable, adjustable, or track-mounted gantries in the United States.



PF-Series



Aluminum



Single-Leg



Tripod



T-Series



E-Series



Wide-Flange



A-Series

## Workstation Bridge Crane & Monorail Product Line

Bridge cranes provide coverage for a large rectangular area. Monorails are ideal for fixed-path production processes.



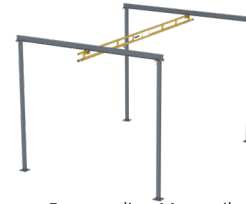
Freestanding



Ceiling-Mounted



Alu-Track Bridge



Freestanding Monorail



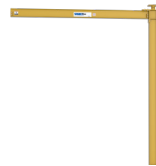
Alu-Track Monorail

## Jib Crane Product Line

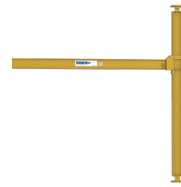
Jib cranes provide cost-effective circular coverage using rotating booms. Spanco offers hundreds of pre-engineered models.



Freestanding



Full-Cantilever  
Mast-Style



Drop-Cantilever  
Mast-Style



Freestanding  
Articulating



Freestanding  
Workstation



Ceiling-Mounted  
Articulating



Wall-Mounted  
Workstation



Cantilever  
Wall-Mounted



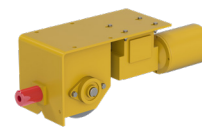
Tie-Rod  
Wall-Mounted

## Tractor Drives & Power Drive Kits

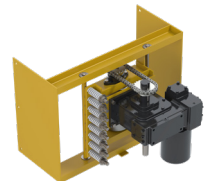
Motorize monorails, trolley hoists, or bridge cranes running on an enclosed track with a Spanco Tractor Drive; motorize a PF Series Gantry Crane for high-volume, high-capacity gantry travel with a Spanco Power Drive; or use a Spanco Retrofit Drive Kit to power the rotation of heavy loads on jib cranes.



Tractor Drive  
(Workstation Bridge Cranes)



Power Drive  
(Gantry Cranes)



Retrofit Drive Kit  
(Jib Cranes)

# SPANCO OVERHEAD CRANE SELECTOR GUIDE

	Crane Type	Application	Standard Capacities	Spans	Heights	Power Option	Support Structure	Beam Type
<b>Gantry Cranes</b>	PF-Series	High capacity & height; Longer spans	Up to 15 tons	Up to 50'	Up to 35' (Under Beam)	●	None	Steel I-beam
	T-Series	Three-way adjustability for span, height, tread	Up to 10 tons	Up to 40'	Up to 24' (Overall)		None	Steel or aluminum I-beam
	A-Series	Portable & lightweight; "A" frame design	Up to 10 tons	Up to 40'	Up to 16' (Under Beam)		None	Steel I-beam
	Aluminum	Very stable under load; as light as 120 lbs.	Up to 3 tons	Up to 20'	Up to 12' (Under Beam)		None	Aluminum I-beam
	E-Series	Economical & dependable for long service life	Up to 5 tons	Up to 12'	Up to 14' (Under Beam)		None	Steel I-beam
	Wide-Flange	Highest capacity cranes; Single or double leg designs	Up to 15 tons	Up to 55'	Up to 35' (Under Beam)	●	None	Wide-Flange Beam
	Single-Leg	Flexibility for narrow, confined spaces & crowded machinery	Up to 15 tons	Up to 50'	Up to 35' (Under Beam)	●	None	Steel I-beam
	Tripod	Mobile lift solutions for heavy lifting in tight spaces	Up to 2 tons	N/A	Up to 13.5' (Eyebolt to Floor)		None	Steel or aluminum tubing
<b>Workstation Bridge Cranes</b>	Freestanding	Easy to install & expand; large coverage area	Up to 2 tons.	Up to 40' (Bridge Length)	Up to 20' (Trolley-Clevis)	●	Standard 6" reinforced concrete	Enclosed Track
	Ceiling-Mounted	Requires no floor space; connects to bridge cranes or monorails	Up to 2 tons	Up to 40' (Bridge Length)	Determined by ceiling structure	●	Hangs from existing roof beam or trusses	Enclosed Track
	Alu-Track® Runways & Bridges	Bridges or runways made from non-corroding, spark resistant aluminum	Up to 1,000 lbs.	Up to 17' (Bridge Length)	Determined by ceiling structure		Hangs from existing roof beam or trusses	Extruded aluminum alloy
	Freestanding Monorail	Ideal for fixed path production processes	Up to 2 tons	N/A	Up to 20' (Trolley-Clevis)	●	Standard 6" reinforced concrete	Enclosed Track
	Ceiling-Mounted Monorail	Requires no floor space; cover the length of your entire facility	Up to 2 tons	N/A	Determined by ceiling structure	●	Flush or cross mounted to ceiling beams	Enclosed Track
<b>Jib Cranes</b>	Freestanding (100 Series)	High capacities, long spans; install anywhere	Up to 15 tons	Up to 50'	Up to 40' (Under Beam)	●	Foundation, base plate, or sleeve insert	I-beam or Wide-Flange
	Mast-Style (200 Series)	360° rotation; eliminates costly foundations	Up to 5 tons	Up to 20'	Up to 40' (Overall)	●	Bolts to floor & steel beams	I-beam or Wide-Flange
	Wall-Mounted (300 Series)	Requires no floor space or foundation; great clearance above/below the boom	Up to 5 tons	Up to 30'	Determined by structure	●	Cantilever or tie-rod supported	I-beam or Wide-Flange
	Articulating (400 Series)	Move loads around corners & columns. Both 360° & 180° rotation	Up to 2,000 lbs.	Up to 16'	Up to 14' (Under Beam)		Ceiling mounted, wall mounted, or freestanding	Steel Tubing
	Workstation (500 Series)	Easy, ergonomic lifting for repetitive loads	Up to 1,000 lbs.	Up to 16'	Up to 12' (Under Beam)		Wall, floor, or portable base	Enclosed Track

\* Maximum capacities, spans, and heights listed vary depending on desired combinations



Morgantown, PA | Las Vegas, NV  
USA/Canada: 1-800-869-2080

Local Phone: 610-286-7200  
Mexico: 95-800-270-1080

SP-PLC2715V2RA