



Installation and Parts Manual for SPANCO® Models 200 and 201 Jib Cranes



TABLE OF CONTENTS

Forward.....	3
Mast Installation.....	4
Boom Installation/Acceptance Test.....	5
Maintenance.....	6
Dimensions.....	7-8
Note Pages.....	9-11
Warranty and Service Policy.....	12

FORWARD:

This manual contains important information to help you install, operate, maintain, and service your new mast type jib crane. We recommend that you study its contents thoroughly before putting the jib into use. We also recommend that you obtain the latest issue of ANSI B30.11 Safety Standard For Monorails and Underhung Cranes and study its contents thoroughly. By practicing the recommended maintenance suggestions, with proper installation, and application of correct operating procedures you will be assured maximum service from your jib crane.

The jibs described in this manual are intended for indoor service. Jib cranes used for outdoor service require special consideration.

Information contained in this manual is subject to change without notice.



This equipment is NOT, in any way, designed for lifting, supporting, or transporting humans. Failure to follow the specified load and mounting limitations can result in serious bodily injury and/or property damage.

IT IS SOLELY THE CUSTOMER'S RESPONSIBILITY TO PROVIDE SUITABLE MOUNTING SUPPORTS FOR THE JIB CRANE. SPANCO RECOMMENDS THAT THE CUSTOMER CONSULT A QUALIFIED PROFESSIONAL ARCHITECT OR ENGINEER IN YOUR LOCAL AREA TO DETERMINE THE ADEQUACY OF THE BUILDING SUPPORT. THERE SHOULD BE NO DEVIATION FROM THE RECOMMENDED FOUNDATION SIZE OR INSTALLATION RECOMMENDATIONS WITHOUT FIRST CONSULTING A QUALIFIED PROFESSIONAL.

MAST INSTALLATION:

NOTE: It is recommended to use a preset leveling plate (by others) and grout to provide a level lower mounting base.

There are several types of base plate leveling methods to be used:

1. Before installation of any foundation, reinforcement, leveling plate, and anchor bolts, refer to the dimensions sheet of your specific model jib crane (see pages 6-7).
2. Verify the exact height of the mast assembly (Dimension B). Verify that the jib mast will fit into the space provided, while maintaining the 3/8" space between the top bearing housing and the shaft shoulder of the upper bearing assembly (the 3/8" space is provided to accommodate sag of the ceiling due to snow or other extraordinary loading conditions on the roof). Installation of the jib is to be done at such time that no snow or extraordinary loading conditions exist.
3. Clamp the top bearing housing to the proposed support location. Level the housing in two (2) directions. Mark the location of the bolt holes using the housing as a template. Remove the bearing housing and find the center of the bracket by scribing an "X" through the marked hole centers.
4. Use a plumb bob to find the center location for the lower bearing housing bracket.

NOTE: Bearing center tolerance is required to be within +/- 1/16" from the top to bottom bracket.

5. Place the bottom bearing housing to the center location established in the above step. Level the housing in two (2) directions. Mark the mounting hole locations using the housing as a template.
6. Drill the mounting holes for the bottom bearing housing using the housing as a guide.
7. Relocate and clamp the top bearing housing and drill the required holes using the housing as a guide.
8. Assemble the top and bottom bearing housing on the mast and stand the mast upright. Slide the mast assembly into position and bolt the housings to the floor and to the upper support system.
9. Check the mast to verify that it is plumb in line with all four bolts. This can be done by establishing a plumb line off the top bearing housing and measuring the distance between the line and the mast. If this measurement is not consistent, with the full length of the mast, adjust the bearing housings accordingly.
10. When mast is plumb, tighten the locking nuts.

NOTE: Do not grout until installation of boom is complete.

BOOM INSTALLATION:

NOTE: Do not install the boom until the mast is installed properly and plumbed.

1. To compensate for anticipated deflection, it may be necessary to adjust boom with the tip raised a distance equal to half the expected deflection. Each boom is designed for a maximum deflection of $\text{Boom Length (inches)} \div 150$. The boom top would therefore be raised = $\text{Boom Length (inches)} \div 300$.
2. Raise boom to the mounting location on the mast and install as follows:
 - a) For 200 Series:
 - 1) Locate the boom to the mast and install using the bolts provided with the jib crane. Insert the top plate bolts and loosely tighten. Install the lower bolts to the mast and loosely tighten.
 - 2) Level the boom with the mast using a minimum 6'-0" level. Shim stock may be used at the lower bolts for leveling.
 - b) For 201 Series:
 - 1) Locate the boom to the mast and install using Drop Boom Pin and the bolts provided with the jib crane. Insert the Drop Boom Pin. Install the lower bolts to the mast and loosely tighten.
 - 2) Level the boom with the mast using a minimum 6'-0" level. Shim stock may be used at the lower bolts for leveling.
3. Tighten all bolts.
4. Re-check for plumb and level. Adjust as necessary.
5. If your jib crane requires grout at the base plate, it should be grouted at this time.

ACCEPTANCE TEST:

After the jib crane has been installed, OSHA requires an acceptance test before operating and also after any modifications. This acceptance test should be performed by an authorized dealer or installer.

MAINTENANCE:

Once installation is complete the jib crane system should be checked thoroughly for tightness of nuts and bolts. In order to maintain efficient operating condition, SPANCO recommends establishing a regular inspection and lubrication schedule. Inspection of all parts should be made. Loose parts should be adjusted and worn parts should be replaced immediately.

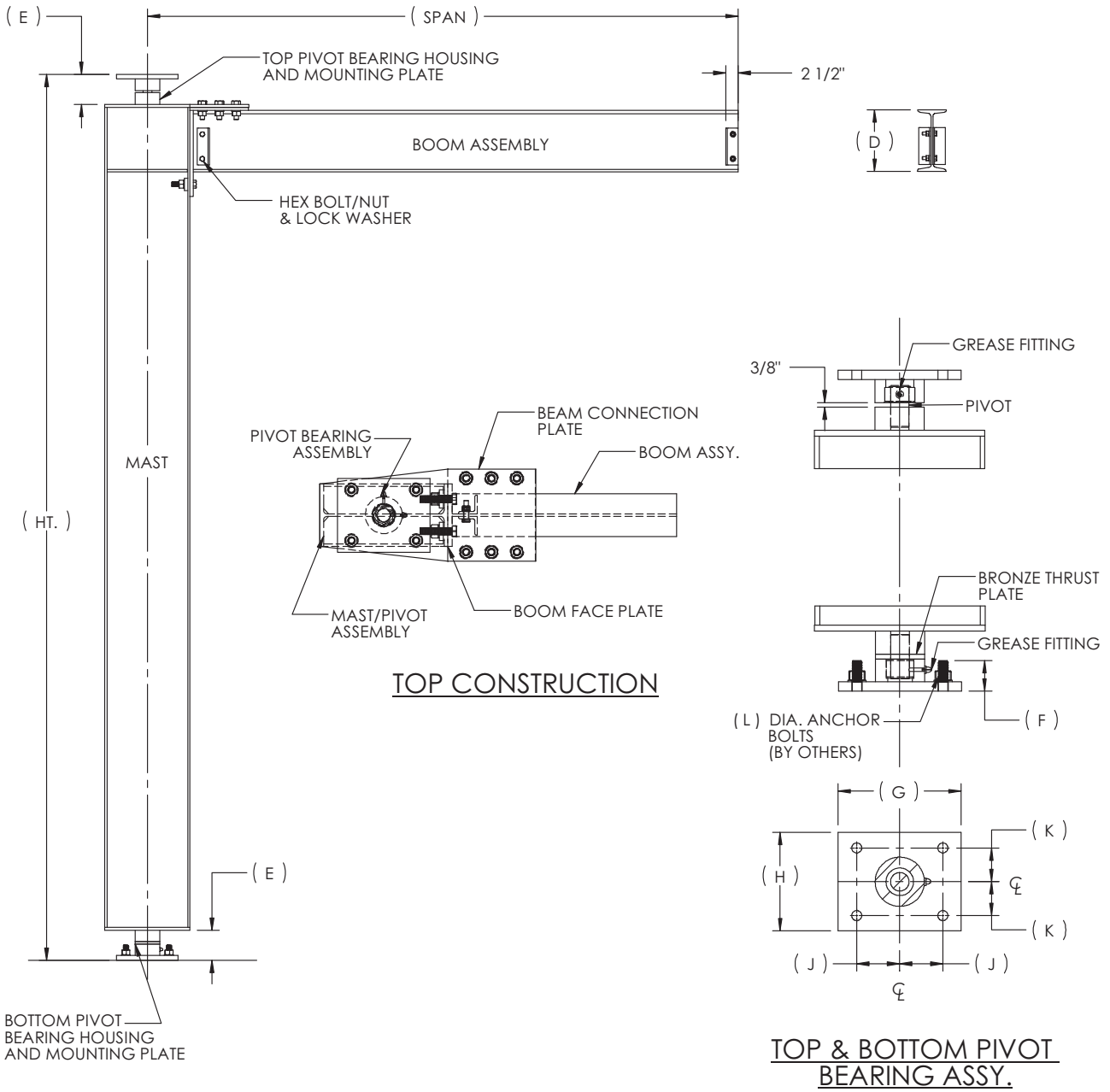
If a specific usage pattern cannot be determined, the crane operator or maintenance engineer should estimate when the crane should be lubricated. Generally, a jib crane operating 24 hours per day, seven days per week requires lubrication at least once a week. A jib crane operating eight hours per day, five days per week requires lubrication once every two to three weeks. A jib crane operating once or twice a month requires lubrication at least once every six months.

NOTE: The points requiring lubrication are the main pivot bearings.

RECOMMENDED LUBRICANTS:

NLGI No. 1 or No. 2 greases.

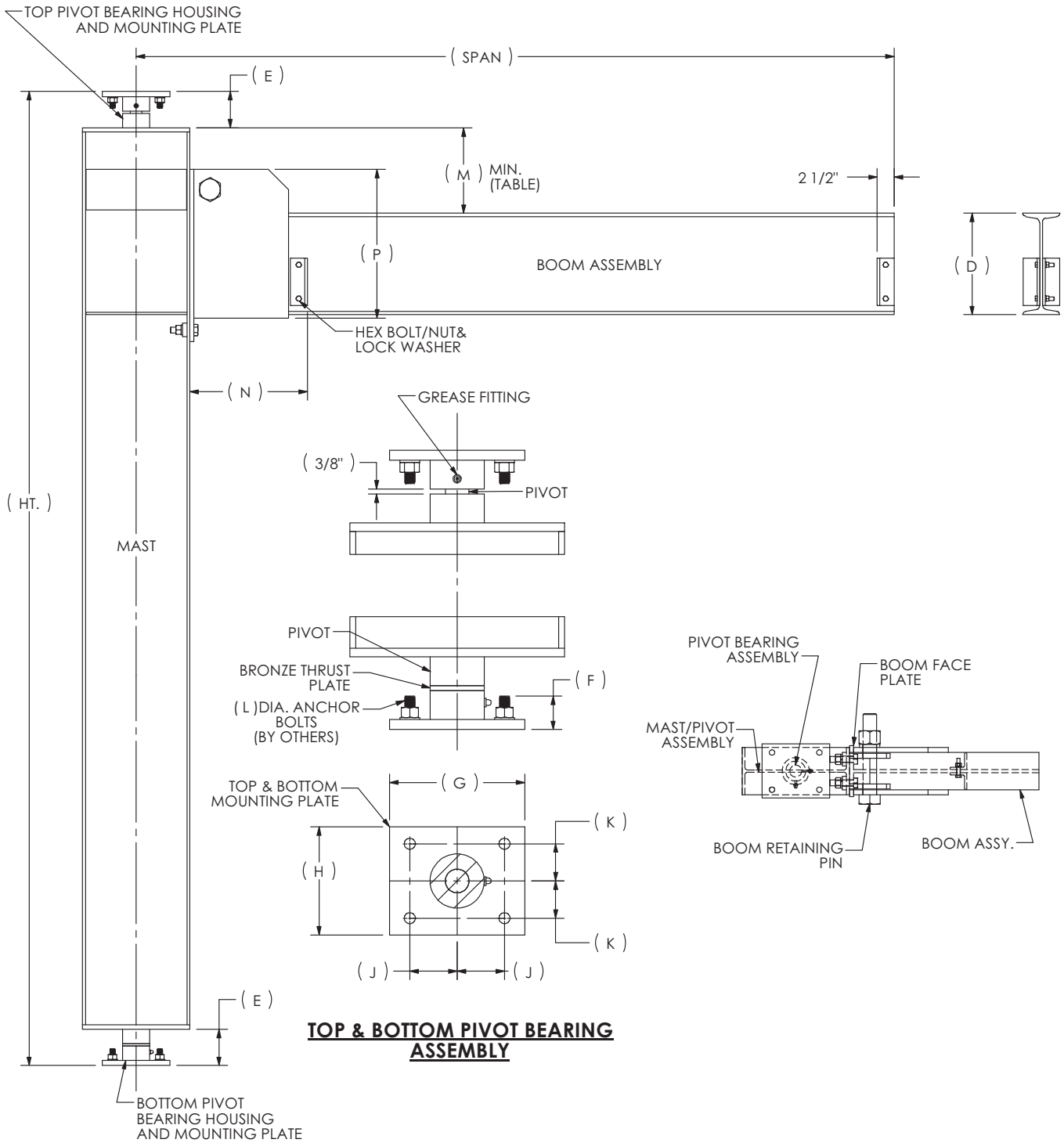
MAST TYPE JIB CRANE-360° ROTATION FULL CANTILEVER-MODEL-200---



PIVOT MOUNTING DIMENSIONS

	PIVOT NOM. DIA.	E	F	G	H	J	K	L
A	1 1/2"	4 7/8"	4 1/2"	10"	8"	3 1/2"	2 3/4"	3/4" DIA.
B	1 3/4"	5 3/8"	5"	10"	8"	3 1/2"	2 3/4"	3/4" DIA.
C	2 1/2"	7 3/8"	7"	12"	9"	4 1/2"	2 3/4"	1" DIA.

MAST TYPE JIB CRANE-360° ROTATION DROP CANTILEVER-MODEL-201---



PIVOT MOUNTING DIMENSIONS

	PIVOT NOM. DIA.	E	F	G	H	J	K	L
A	1 1/2"	4 7/8"	4 1/2"	10"	8"	3 1/2"	2 3/4"	3/4" DIA.
B	1 3/4"	5 3/8"	5"	10"	8"	3 1/2"	2 3/4"	3/4" DIA.
C	2 1/2"	7 3/8"	7"	12"	9"	4 1/2"	2 3/4"	1" DIA.

TABLE-I

D DIM BEAM	6	7	8	10	12	15	18	20R	24R	25R
M (MIN)	3 7/8"	4	4	5	5 1/8	7 1/8	7 1/8	13	13	13
N	8	8	8	10 1/8	10 1/8	17 1/2	21	21	21	21
P	-	-	-	-	-	-	30	30	30	30



Spanco, Inc.
604 Hemlock Road
Morgantown, PA, 19543

Toll Free: 800-869-2080
Local: 610-286-7200
Fax: 610-286-0085

Spanco.com

TEN-YEAR SPANCO WARRANTY

Products covered under the Ten-Year Warranty:

- Manual Steel Freestanding, Ceiling Mounted Workstation Bridge Cranes, and Monorails
- Manual Aluminum (Alu-Track®) Workstation Bridge Cranes and Monorails
- Manual Jib Cranes (I-Beam, Articulating, and Workstation Jib Cranes)
- Manual Gantry Cranes and Tripods

What the Ten-Year Warranty covers:

- Defects in Equipment material and workmanship
- Wearable parts (end truck and hoist trolley wheels only)

Spanco, Inc. warrants its manual workstation bridge crane products, jib crane products, and gantry crane products to be free from defects in material and workmanship for a period of ten (10) years or 20,000 hours, commencing on the date of shipment to the first retail purchaser. This warranty extends to non-wearable parts only, with the exception of the wheels supplied on manually operated workstation end trucks and hoist trolleys. This warranty does not cover defective equipment or system failure caused by misuse, negligence, improper installation or maintenance, or equipment that has been used in excess of its rated capacity or beyond its service factors. It does not apply to equipment that has been altered without Spanco's written authorization.

Written notice of any claimed system defect must be given to Spanco within thirty days of discovery. Spanco's obligation under this warranty is limited to the replacement or repair of Spanco's products at the factory or separate location approved by Spanco. The purchaser is responsible for all freight and transportation costs relating to equipment repair or replacement. **Other than the abovementioned warranty, Spanco will not honor any other warranties—whether express, implied, or statutory—and disclaims any warranties of merchantability or fitness for a particular purpose. Spanco is not liable—under any circumstances—for any indirect, incidental, or consequential damages including but not limited to lost profits, increased operating costs, or loss of production.**

This warranty does not extend to components or accessories not manufactured by Spanco. The purchaser's remedy for such components and accessories will be determined by the terms and conditions of any the warranty provided by the manufacturer of such components and accessories.

NOTE: *All motorized Spanco products come with a One-Year Warranty on drive components.*