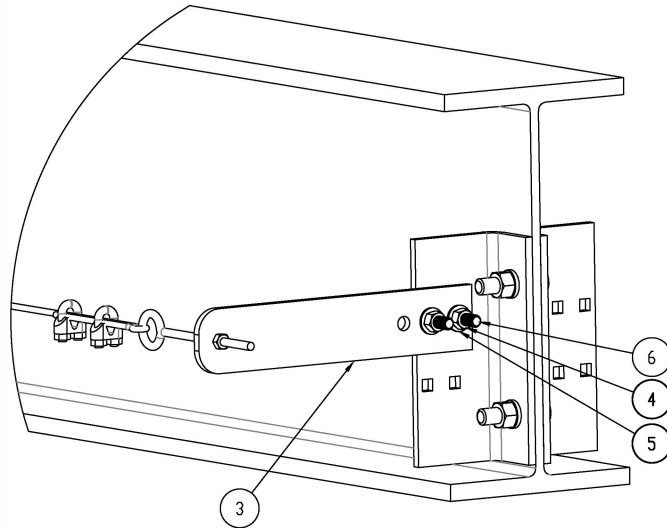


THE INFORMATION CONTAINED IN THIS DRAWING IS THE SOLE PROPERTY OF SPANCO. ANY REPRODUCTION IN PART OR WHOLE WITHOUT THE WRITTEN PERMISSION OF SPANCO IS PROHIBITED.

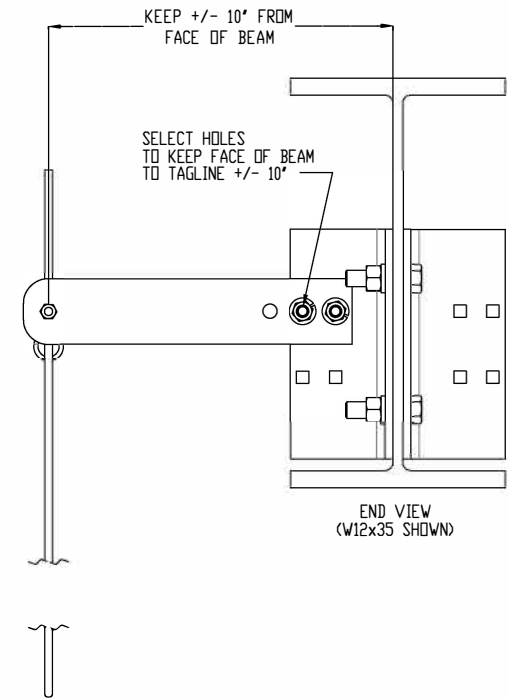
STEP 1:
DETERMINE WHICH SIDE OF THE BEAM TO LOCATE THE TAGLINE. THERE ARE 3 TAGLINE ARM HOLES. DETERMINE WHICH 2 TAGLINE ARM HOLES WILL BE USED TO KEEP APPROXIMATELY 10" FROM THE FACE OF THE BEAM TO THE TAGLINE CABLE.

STEP 2:
POSITION THE TAGLINE ARM AND INSERT TWO CARRIAGE BOLTS SO THAT THE CARRIAGE BOLT SLOTS PREVENT THE BOLTS FROM ROTATING. TORQUE BOTH 3/8" NUTS TO 33 FT-LBS.

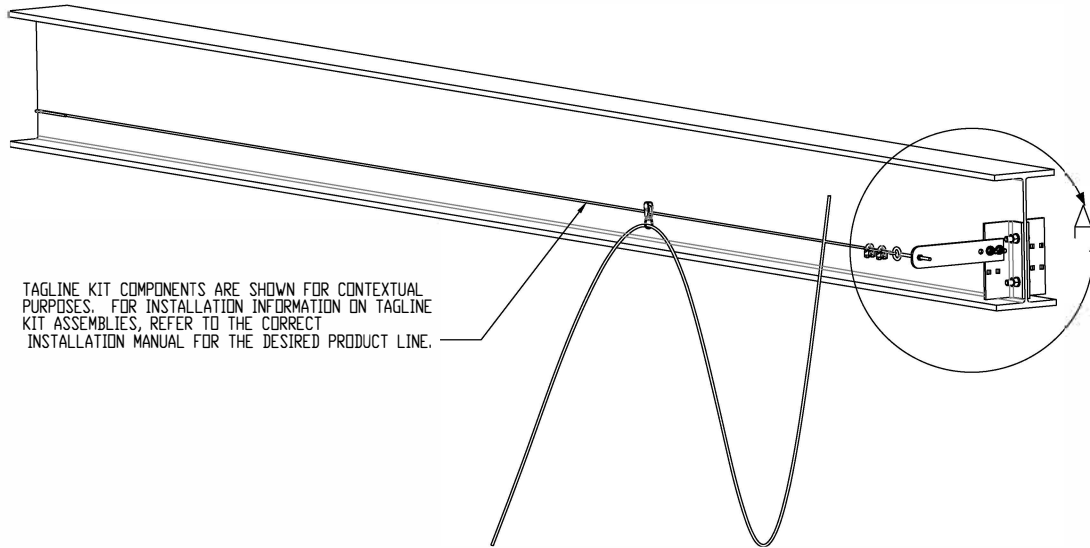
STEP 3:
REPEAT STEPS 1 AND 2 FOR THE OTHER END OF THE BEAM (NOT SHOWN).



DETAIL A
SCALE N.T.S.



END VIEW
(W12x35 SHOWN)



TAGLINE KIT COMPONENTS ARE SHOWN FOR CONTEXTUAL PURPOSES. FOR INSTALLATION INFORMATION ON TAGLINE KIT ASSEMBLIES, REFER TO THE CORRECT INSTALLATION MANUAL FOR THE DESIRED PRODUCT LINE.

ITEM NO.	QTY.	PART NO.	DESCRIPTION
3	1	06-3527	PLATE,ARM,JIB TAGLINE,UNIVERSAL
4	2	11-0020	NUT, HEX 3/8-16
5	2	14-0002	3/8" LOCKWASHER
6	2	10-0329	BOLT,CARRIAGE,3/8-16NCX1 1/2" GR5

NOTE: ONLY ONE END OF BEAM SHOWN, SO TOTAL QUANTITIES ARE DOUBLE.

REV.	DATE	NAME	REVISION DESCRIPTION
UNLESS OTHERWISE SPECIFIED DIMENSIONS ARE IN INCHES TOLERANCES ARE: FRACTIONS DECIMALS ANGLES ±1/16" ±.005 ±1° XXX ±.005 XXXX ±.0005			 HIGHTOWER BUSINESS PARK, HIGHTOWER ROAD, HIGHTOWER, PA 19040
CAD GENERATED DRAWING. DO NOT MANUALLY UPDATE DO NOT SCALE DRAWING			
APPROVALS		DATE	JIBS JIB BOLT-ON TAGLINE ARM ASSEMBLY
DRAWN		12/27/19	
CHECKED			
APP'D			
FINISH		PLT DATE	SIZE DWG. NO.
PROJECT NO.		SCALE	06-3528-DWG
		1:1	REV. -
			CAD FILE: 06-3528-DWG SHEET 1 OF 1